

# HOW DO YOU MEASURE TEMPERATURE ACROSS YOUR HEATED INTERFACES?

With the Topaq® Advanced Temperature Analysis System, statistical data and detailed digital visuals can be revealed from Thermex® temperature indicating sensor paper.

Topaq® enables a wealth of statistical information and high resolution visuals to be revealed from Thermex® - greatly enhancing the ability of the sensor film to define temperature distribution. Key statistics like average temperature and total square inches of contact can be determined with ±4% accuracy using Topaq®'s advanced analysis capabilities. Topaq® can also render histograms and population statistics on user-defined regions of interest.

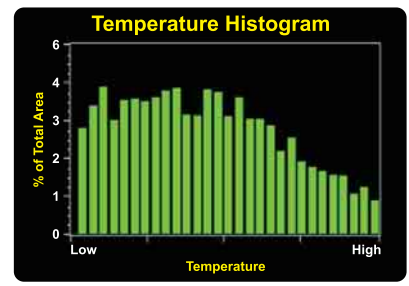
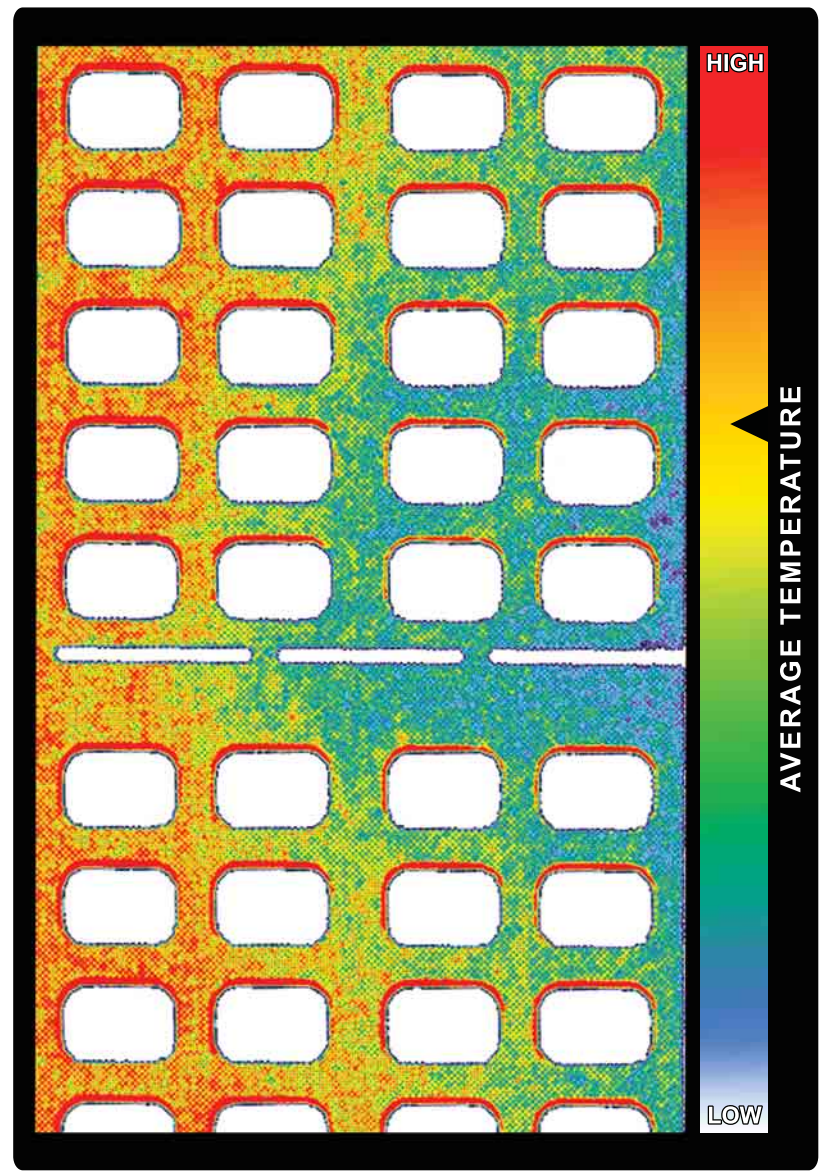
- FEATURES**
- 2D pseudocolor display of temperature distribution
  - 3D topographical view
  - Graphical display of temperature data
  - Graphical view of data along a user-defined line

**TEMPERATURE ANALYSIS SERVICE PRICING**

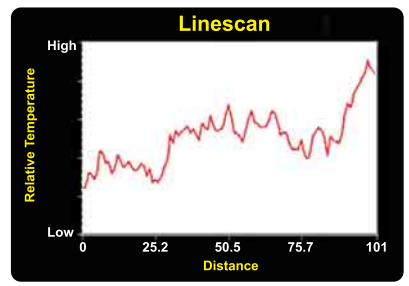
Number of Images	Cost per Image
1	\$90
2	\$75
3	\$65
4	\$55
5 or more	\$50

Price is based on 5-7 day turnaround. Overnight delivery is available for a 20% surcharge.

EXAMPLE IMAGE OF A HEAT SEAL TEMPERATURE PROFILE



Histogram shows relative temperature versus percent of total temperature area



Line graph displays relative temperature over the user defined line

Mail your temperature-exposed impressions to the attention of our "Imaging Dept." **Be sure to include your contact info below:**

Name \_\_\_\_\_

Date \_\_\_\_\_

Company \_\_\_\_\_

Address \_\_\_\_\_

City \_\_\_\_\_ State \_\_\_\_\_ ZIP \_\_\_\_\_

Telephone \_\_\_\_\_ E-mail \_\_\_\_\_



Sensor Products Inc., USA c/o Imaging Dept.  
 300 Madison Avenue • Madison, NJ 07940 USA  
 Phone: 1.973.884.1755 • Fax: 1.973.884.1699  
 imaging@sensorprod.com  
 www.sensorprod.com