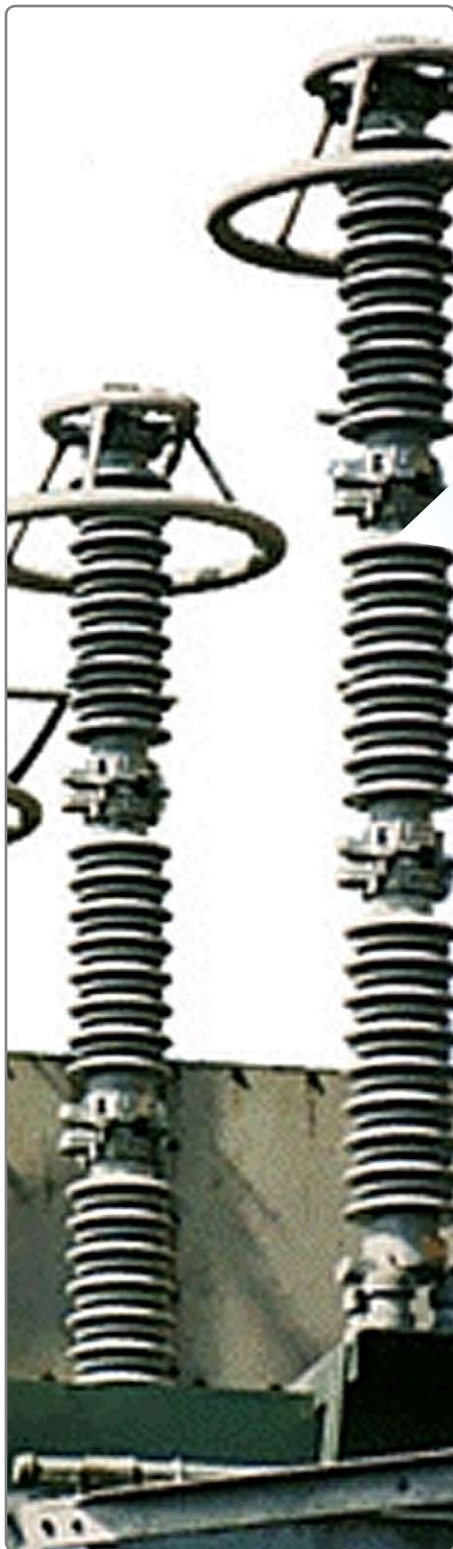
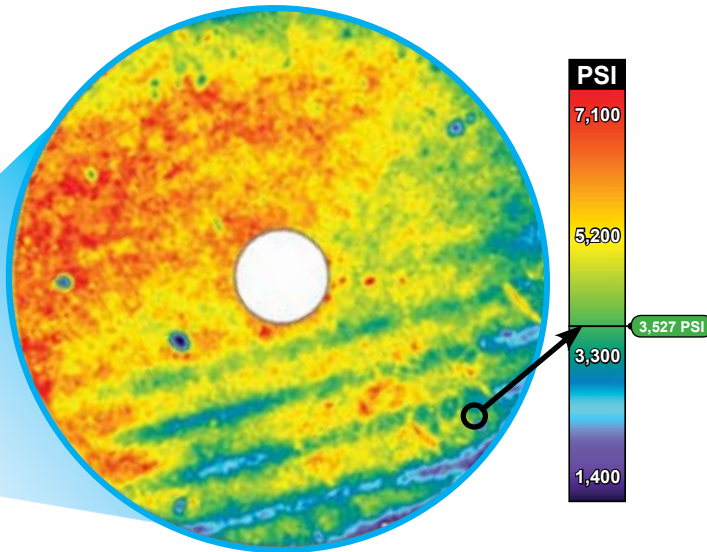


# TACTILE PRESSURE INDICATING SENSOR FILM

Application: Surge Arrestor Electrical Contact Interface



Surface Pressure Distribution Map of the MOV Blocks Contacting Each Other

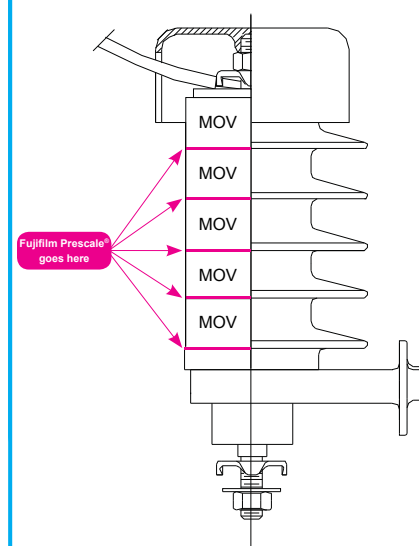


Fujifilm Prescale® pressure indicating sensor film is a diagnostic tool used for troubleshooting and maintenance. It reveals surface pressure **distribution and magnitude** between the MOV-blocks and the terminations in your high power arrester application.

## Why

- Longevity of the arrester is greatly improved when a lightning strike's current is homogeneously distributed across the entire surface area of each of the MOV contacts.
- Total device failure can occur if there is insufficient pressure holding the stack together.
- Current limited by high pressure "hot spots" reduces the protection level of the arrester.
- Using Fujifilm Prescale® ensures proper compression **load level** as well as **distribution of that load (uniformity)**.
- Fujifilm Prescale® sensor film applied during testing and analysis helps ensure a maximally performing protection device.

## SIDE PROFILE



To ensure long arrester lifetime, the MOV's disks need to be sufficiently compressed together to withstand multiple lightning strikes.

TACTILE PRESSURE EXPERTS



**Sensor Products Inc.**  
 300 Madison Avenue  
 Madison, NJ 07940 USA  
 Phone: 1.973.884.1755  
 Fax: 1.973.884.1699  
 www.sensorprod.com

[www.sensorprod.com](http://www.sensorprod.com)