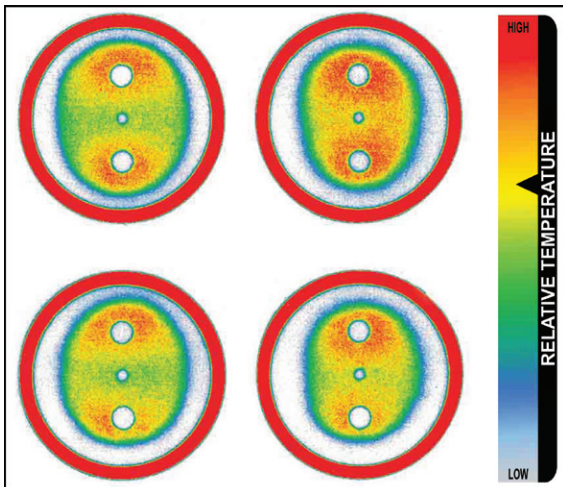


Print Electronic News

Article Selections From: <http://www.PrintElectronicNews.com>

FEBRUARY 9, 2011 5:48PM

Thermex® Sensor Film Allows Engineers to Quickly Check & Correct Surface Temperature Variations in Heat Sinks



Thermex® temperature distribution paper enhanced by Topaq® Analysis

Since thermal management is critical to heat sink performance, testing with Thermex® temperature distribution film has become a useful design and assembly quality control check. Thermex®, from Sensor Products Inc, is an economical thin sensor film that can be used in virtually any application to test and monitor heated contacting surfaces from 200° to 300°F (93° to 149°C). It can be used alone or in conjunction with Fuji Prescale® pressure indicating film offered by Sensor Products Inc.

Upon exposure to heat, Thermex® changes color instantaneously and permanently to reveal temperature distribution between any two contacting surfaces. The intensity of this color change directly relates to the temperature it was exposed to enabling Thermex® to reveal spot high or low temperature zones and minute surface variations.

Invasive intolerant environments and interfaces that aren't easily accessed with traditional temperature indicators and infrared thermometers are among candidates for Thermex®.

While the Thermex® used for testing may be saved for archival purposes, its low cost renders it inherently disposable. A sheet can be easily trimmed for smaller applications or custom cut to defined dimensions.

New applications for Thermex® are being discovered daily. Common applications include heat sealing, lamination/press, flat web-type machines used in converting, ultrasonic welding, heat sinking, and clutch/brake interfaces.

Post processing analysis of Thermex® is available for temperature fluctuations that need to be analyzed with great precision. For a complimentary sample of Fuji Prescale® film or more information about Thermex®, call Sensor Products Inc. 1.973.884.1755 email, info@sensorprod.com or view sensorprod.com/thermex. Many items from Sensor Products Inc. are available through their shopping cart online.

About Sensor Products Inc. (USA)

Headquartered in New Jersey and established in 1990, Sensor Products Inc. is a world leader in the manufacture and distribution of tactile pressure indicating solutions. Their customized and off-the-shelf products are installed within all of the Fortune 500 industrial companies as well as thousands of smaller manufacturing firms. Their sensors are used in applications as diverse as tire testing to semiconductor manufacturing and from R&D labs to space missions.

Media Contact: Arlene Gleicher Sensor Products Inc.
1.973.884.1755 x5826 (USA)
pr@sensorprod.com