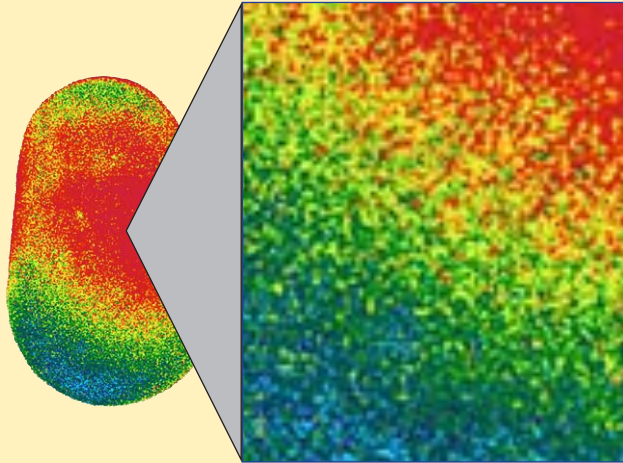


# TACTILE PRESSURE INDICATING SENSOR FILM

## Application: Lamination

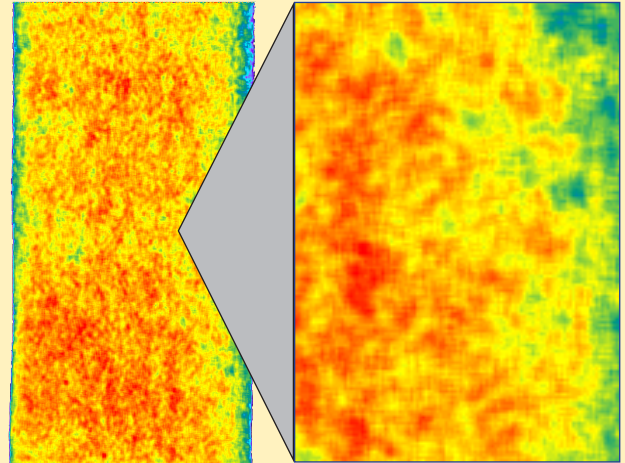
Pressure<sup>®</sup> is a thin flexible mylar film that reveals pressure distribution and magnitude between any two contacting surfaces. The film is useful in lamination applications that are either static or moving. In a static lamination, Pressurex can identify misregistration, parallelism problems or press platen defects. In moving laminations, Pressurex can determine roller parallelism problems and roller defects at the nip point.

### Example Images Revealing Pressure Distribution:



LAMINATION PRESS

(Enlarged View)



LAMINATION PRESS

(Enlarged View)

Above film images are further analyzed with our Topaq, optical scanner, system.

# IMAGINE...

a sensor as **LARGE, THIN** and **FLEXIBLE** as this page...

Upon the application of force the microcapsules rupture, producing an instantaneous and permanent color change. Like Litmus paper, the color intensity of Pressurex is quantifiable; the color intensity reveals precisely what pressure level (PSI or kg/cm<sup>2</sup>) was applied at any discrete point on the surface of the film.

PHYSICAL SPECIFICATIONS	
TEMPERATURE RANGE	41°F/5°C to 95°F/35°C (higher for brief exposure)
HUMIDITY RANGE	20 to 90% RH
GAUGE (Thickness)	4, 8, 20 mils
SPATIAL RESOLUTION	5 to 15 microns
SUBSTRATE	Polyethylene Terephthalate (PET)
ACCURACY	±10% visual, ±2% utilizing optical measurement systems
SHELF LIFE	2 Years

FILM TYPE	PRESSURE RANGE
MICRO <small>(Shows relative pressure distribution only)</small>	2 - 20 PSI/(0.14 - 1.4 kg/cm <sup>2</sup> )
ULTRA LOW	28 - 85 PSI/(2 - 6 kg/cm <sup>2</sup> )
SUPER LOW	70 - 350 PSI/(5 - 25 kg/cm <sup>2</sup> )
LOW	350 - 1,400 PSI/(25 - 100 kg/cm <sup>2</sup> )
MEDIUM	1,400 - 7,100 PSI/(100 - 500 kg/cm <sup>2</sup> )
HIGH	7,100 - 18,500 PSI/(500 - 1,300 kg/cm <sup>2</sup> )
SUPER HIGH	14,000 - 43,200 PSI(984 - 3,000 kg/cm <sup>2</sup> )

