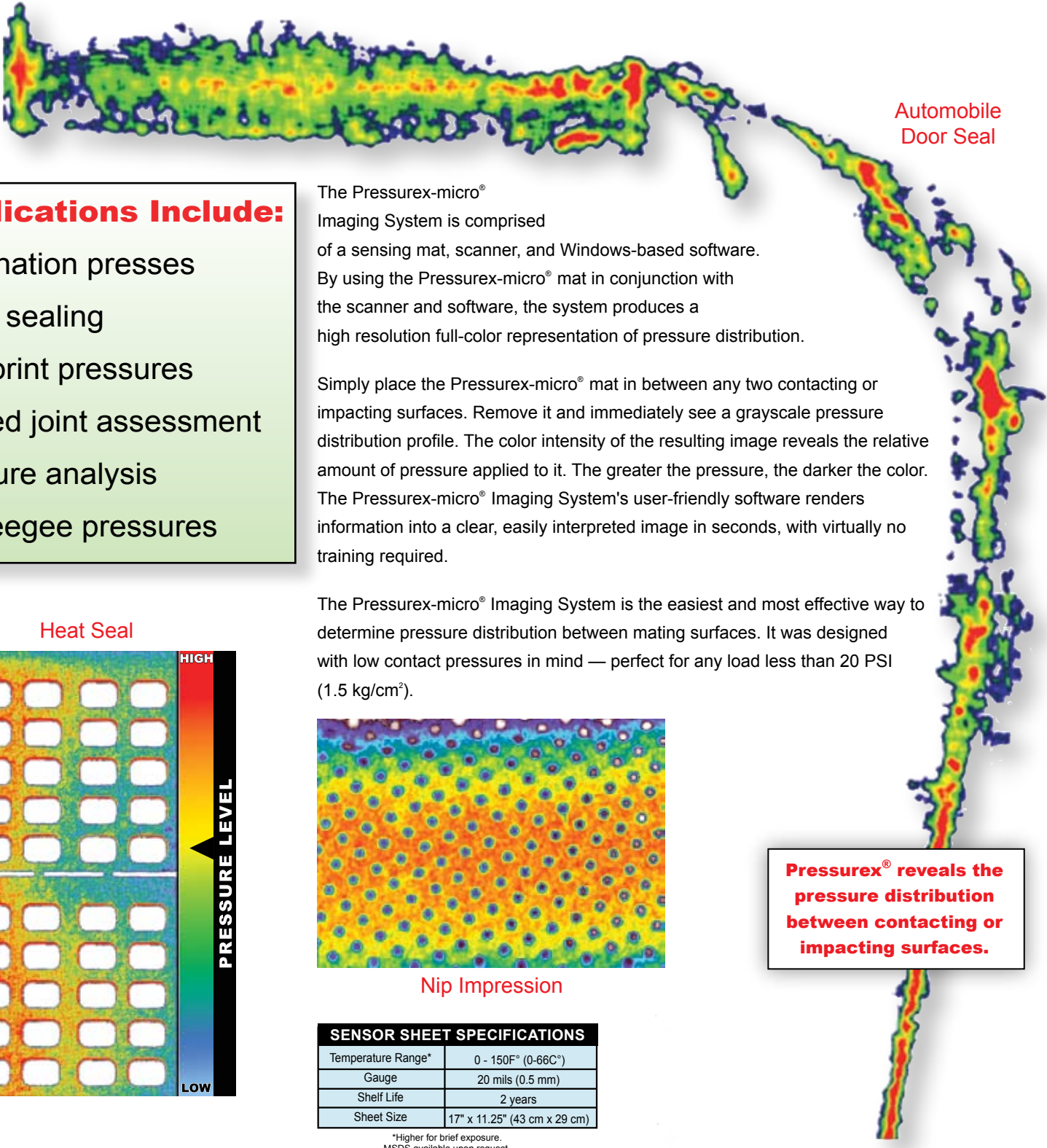


SURFACE PRESSURE MAPPING SYSTEM

Application: Low Pressure



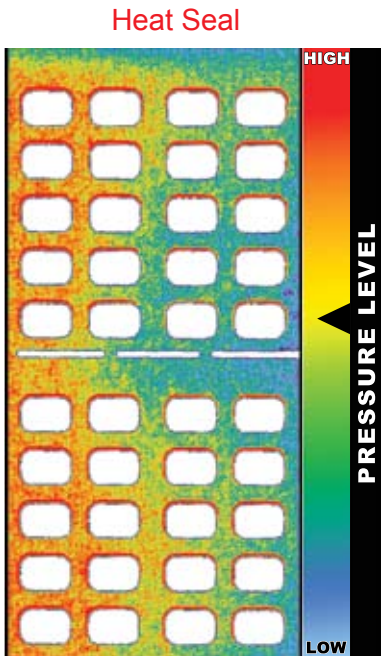
Automobile Door Seal

- Applications Include:**
- lamination presses
 - heat sealing
 - footprint pressures
 - bolted joint assessment
 - closure analysis
 - squeegee pressures

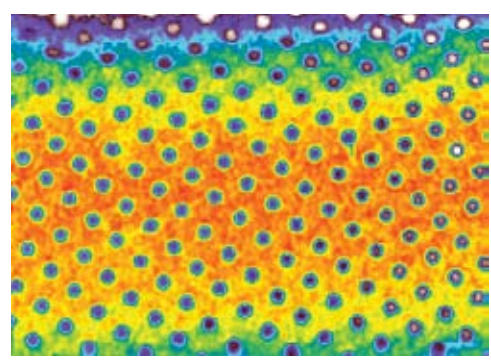
The Pressurex-micro[®] Imaging System is comprised of a sensing mat, scanner, and Windows-based software. By using the Pressurex-micro[®] mat in conjunction with the scanner and software, the system produces a high resolution full-color representation of pressure distribution.

Simply place the Pressurex-micro[®] mat in between any two contacting or impacting surfaces. Remove it and immediately see a grayscale pressure distribution profile. The color intensity of the resulting image reveals the relative amount of pressure applied to it. The greater the pressure, the darker the color. The Pressurex-micro[®] Imaging System's user-friendly software renders information into a clear, easily interpreted image in seconds, with virtually no training required.

The Pressurex-micro[®] Imaging System is the easiest and most effective way to determine pressure distribution between mating surfaces. It was designed with low contact pressures in mind — perfect for any load less than 20 PSI (1.5 kg/cm²).



Heat Seal



Nip Impression

Pressurex[®] reveals the pressure distribution between contacting or impacting surfaces.

SENSOR SHEET SPECIFICATIONS	
Temperature Range*	0 - 150F° (0-66C°)
Gauge	20 mils (0.5 mm)
Shelf Life	2 years
Sheet Size	17" x 11.25" (43 cm x 29 cm)

*Higher for brief exposure.
MSDS available upon request.