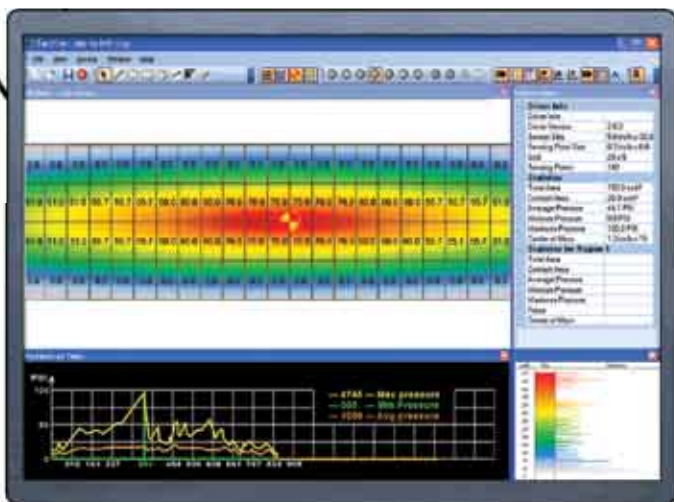
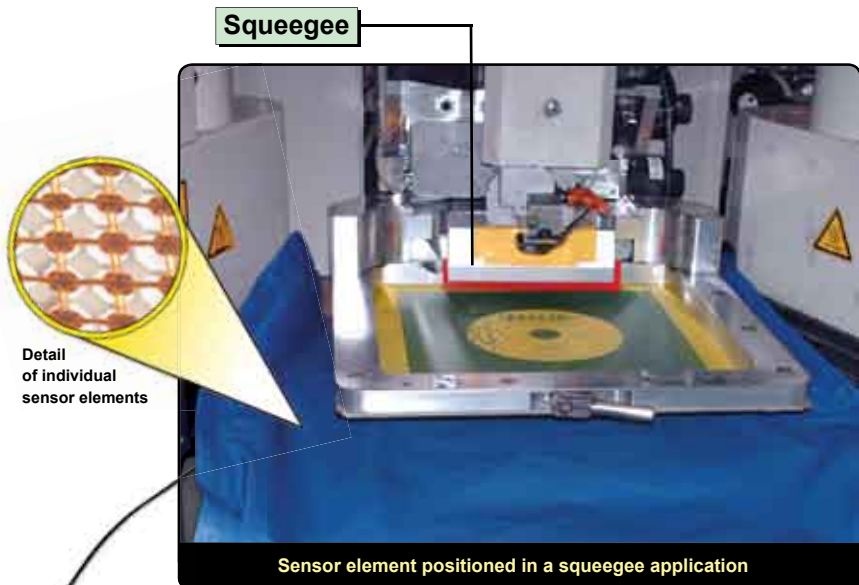


REAL-TIME TACTILE PRESSURE ANALYSIS

Application: Squeegee



Characterization of pressure distribution & magnitude across a squeegee

"Tactilus® is delivered with the expectation that you'll want to integrate it into your existing process control software and GMP protocol. To that end we offer DLL's and custom GUI's as a standard practice."

JEFFREY G. STARK
CEO

The Tactilus® squeegee leveling sensor is designed to allow the user to collect pressure position and magnitude data. An improperly aligned squeegee results in misregistration, uneven dispersion of solutions and possibly serious product defects. All of which lower yields and raise costs. The Tactilus® squeegee leveling sensor is physically placed right at the interface where contact occurs assuring a greater degree of accuracy, repeatability and validity than any other pressure transducer or load cell could provide.

Tactilus® software is so user-friendly that even an inexperienced user will quickly benefit from its powerful features. Within minutes Tactilus® reveals precisely where the weighted average center of mass is along the squeegee surface. When this is dead center, you know your squeegee is perfectly aligned.

Tactilus® Technology: Tactilus® is a matrix-based tactile surface sensor. Essentially an "electronic skin" that records and interprets pressure distribution and magnitude between any two contacting or mating surfaces and assimilates that data collected into a powerful Windows-based tool kit. Each Tactilus® sensor is carefully assembled to exacting tolerances and individually calibrated and serialized. The architectural philosophy of Tactilus® is modular allowing for portability, easy expansion, and simultaneous data collection of up to 4 discrete sensor pads. Tactilus® employs sophisticated mathematical algorithms that intelligently separate signal from noise, and advanced electronic shielding techniques to maximize the sensor's immunity to noise, temperature and humidity.

SENSOR SPECIFICATIONS	
Technology	Piezoresistive
Pressure Range	0 - 500 PSI (0 - 35 kg/cm ²)
Grid Size	Up to 32 x 32
Sensing Points	1024
Total Sensing Area	Up to 25" x 75" (64 x 191 cm)
Scan Speed	Up to 30 hz
Spatial Resolution	From 0.4 in (9.5 mm)
Thickness	0.1 in (1.5 mm)
Accuracy	± 10%
Repeatability	± 2%
Linearity	1.5%

System includes: sensor element, electronic controller, software and cables