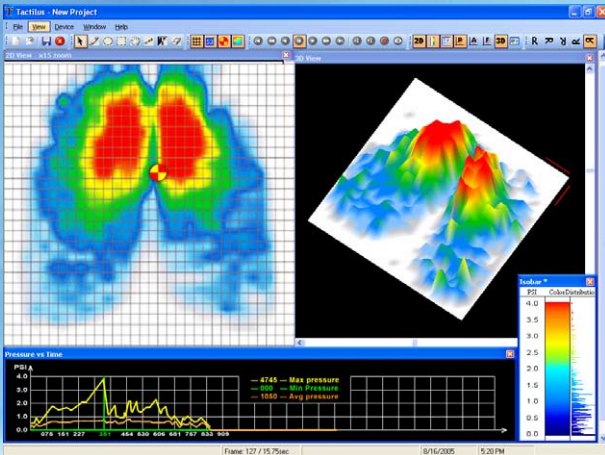


REAL-TIME TACTILE PRESSURE ANALYSIS

SEATING



Characterization of surface pressure of a person on a seat

The NEW Tactilus® Bodyfitter® sensor system delivers real-time surface pressure distribution between a person and their seating surface. Bringing human factors engineering to a new level, Bodyfitter® is capable of characterizing pressure magnitude of the seat surface, back and head rest simultaneously. Bodyfitter® then assimilates the data collected into our powerful Windows® based software providing you with everything from pressure maps to detailed statistical analysis. In the design of seating surfaces, position, density and conformity of materials is critical. Bodyfitter® not only significantly reduces the number of test iterations required, but is a revolutionary design aid towards the quest for ergonomic fit.



Tactilus® seat sensor and electronic hub

Tactilus Bodyfitter® is the most economical, scientific and user-friendly system for surface pressure mapping available today, both in the lab as well as in-store.

Tactilus® is matrix based tactile surface sensor that works by the principle of piezoresistance. Tiny sensing cells cover the entire surface area of our sensor "skin" allowing for discrete spot pressure analysis at any point in the contact region. Sensor Products primary proposition is to offer our clients precisely what they require or need. To that end, everything we design can be completely tailored to your unique situation.

Powered by
Tactilus®



Sensor Products Inc.
300 Madison Avenue
Madison, NJ 07940 USA
Phone: 1.973.884.1755
Fax: 1.973.884.1699
www.sensorprod.com

POWERFUL MODULES

- Anthropometric Feature – reads and reports body attributes, and Somatotype
- Chiropractic Diagnostic Package
- Consumer Database - designed to track customers and salesman performance and response-to-sale ratios
- Languages – software in Spanish, Chinese, German and French
- Private Branding - name and indentia on hardware and software
- Wireless Option
- Retail Environment Version – touchscreen panel and graphical user interfaces
- Scientific Analysis Package

SPECIFICATIONS

Technology	Piezoresistive
Pressure Range	0 - 4 PSI (0 - 0.28 kg/cm ²)
Grid Size	32 x 32
Sensing Points	1,024
Total Sensing Area	17 x 17 in (43 x 43 cm)
Scan Speed	Up to 95 hertz
Spatial Resolution	Custom from 0.5 in ² (1.3 cm ²)
Thickness	30 mils (0.7 mm)
Accuracy	± 10%
Repeatability	± 2%
Hysteresis	± 5%
Non-linearity	± 1.5%

www.sensorprod.com