



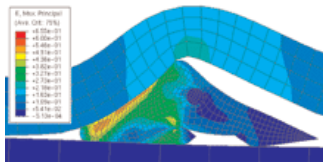
Bolted Joint / Gasket

Pressurex pressure indicating sensor film can quickly, accurately and inexpensively identify how force is dispersed at the interface of any two contacting or mating surfaces. Pressurex can assess both bolting patterns and the number of bolts required to achieve a satisfactory seal and improve quality in both design integrity and production of components and products with gasketed and flanged surfaces.



Pressurex sensor film comes in the form of an ultra-thin page-sized sheet of microencapsulated mylar. When placed between interfacial surfaces, Pressurex changes color. The intensity of this color is proportional to the amount of force applied, allowing you to actually quantify the stress characteristics across the surface of the film. Precise PSI can be determined by comparison of the film's resultant color change to a color calibration chart (conceptually similar to interpreting Litmus paper) or by using one of several imaging systems, listed below, that Sensor Products Inc. supplies.

Bolt Consulting Services



Sensor Products Inc, through its affiliate company, now offers consulting services related to seal/gasket analysis and design. Through our proprietary Seal Performance Diagram technique we can assist you in generating a very clear picture of how seals react to fluid pressure and how to optimize your joint design to carefully balance economic costs versus achieving the minimal performance requirement threshold. Contact Jeffrey Stark at jstark@sensorprod.com for more information.



Pressurex Sensor Film

We are the authorized U.S distributor for Pressurex. A unique sensor film that visually reveals the distribution and magnitude of pressure between any contacting surfaces, Pressurex can be used for taking nip impressions, in bolted joint analysis, in composite layup testing and much more.

Pressurex-Micro

Pressurex-micro is a tactile pressure indicating sensor specifically designed for low PSI applications. Takes up on the low end where Pressurex leaves off. Perfect for examining any load less than 20 PSI (1.5 kg/cm²).



Topaq

Used in conjunction with Pressurex pressure measuring film, Topaq renders high-resolution, color-calibrated images that accurately reflect how force is disbursed within your application. Also provides precise statistical data about the force applied.

Topaq Service

Now we can quickly obtain enhanced digital visuals from your raw Pressurex films and extract a wealth of statistical data from them as well using Topaq. We'll do it all for you - send us your exposed films and we'll introduce you to the awesome capabilities of Topaq. Your first film imaging is FREE!



Tactilus

Tactilus is our newest electronic tactile force and pressure indicating sensor. It allows you to monitor precisely how force is disbursed between any two contacting or mating surfaces in real-time. Any application or test where pressure lies between 0.5 PSI (0.04 kg/cm²) to 12,000 PSI (845 kg/cm²) is a viable candidate for Tactilus technology.



BoltFAST

The most comprehensive bolted joint analysis software available, consisting of three distinct components: Joint Analysis, Thread Analysis and Torque Analysis. By combining a large database of fastener and interface materials and their physical characteristics, BoltFAST allows you to quickly perform checks and calculations on a bolted joint that otherwise could only be completed after extensive research and testing.