



Sensor Products Services

In-House Analysis



Sensor Products Services

In-House Analysis

Put away your torque wrenches, calibration equipment, micrometers and load cells!

Sensor Products now introduces our new in-house surface stress analysis service. All you need to do is send your part, machine, fixture or assembly to us and we'll do the rest. Via video-conferencing you can view the results of our analysis practically in real-time.

By applying our sophisticated arsenal of surface stress measuring instruments in conjunction with our 23 years of combined surface stress analysis experience, we can tackle the most complicated projects. We can perform the testing that might cost you hours of time to set up and perform. Any application or project where two surfaces are mating, compressing or impacting will stand to benefit from our comprehensive assessment and analysis services.



Sensor Products Services

In-House Analysis

We test and measure contact pressure distribution for a wide variety of applications and processes. Some examples are listed below:

- **airflow**
- **body mapping**
- **bolted joints**
- **circuit boards**
- **clamping**
- **door seals**
- **gaskets**
- **heat seals**
- **heat sinks**
- **impacts**
- **injection molding**
- **lamination**
- **nip impressions**
- **presses**
- **squeegees/wipers/doctor blades**
- **tires**
- **wafer polishing**

Upon completion of the testing and analysis, we provide you with:



Detailed reports



Video of our testing protocol



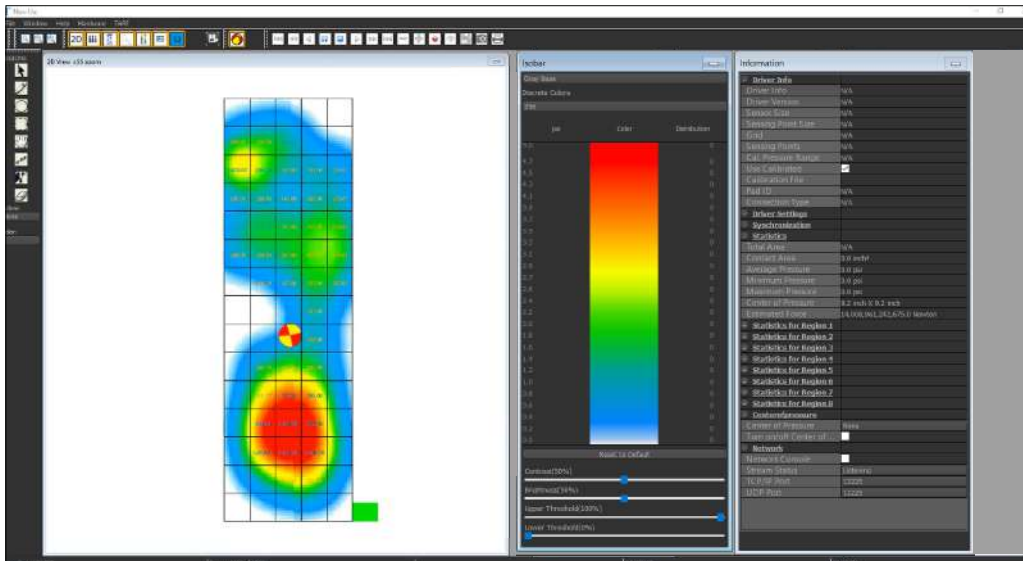
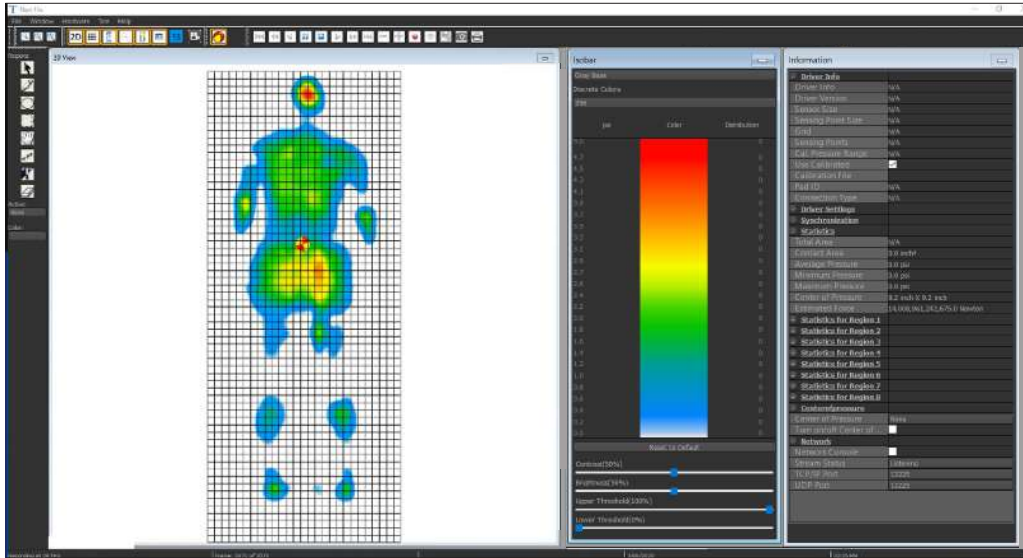
Advice and guidance from our
expert technicians



Graphic images and statistical
analysis generated by our electronic
stress analysis sensor systems

Sensor Products Services

Analysis using Tactilus® Body Mapping System



Sensor Products Services

Analysis using Tactilus® Body Mapping System

The screenshot displays the Tactilus Body Mapping System software interface. The main window is titled "2D View x37 zoom" and shows a large circular heatmap representing a foot scan. The heatmap uses a color scale from blue (low pressure) to red (high pressure), with a central red area indicating the highest pressure point. The interface includes a toolbar at the top with various icons for navigation and analysis. On the right side, there are several panels: "Isobar" with settings for Gray Base, Discrete Colors, and Matrix; "Preferences" with options for Matrix, Numeric Display, and Interpolation; and "Information" with fields for Driver Info, Driver/Version, and Sensor Size. Below these panels is a "Logitech® Webcam Software" window showing a live video feed of a person's foot on the sensor. The video window has a "Photo" button and a "Video" button. At the bottom of the interface, there are sliders for "Brightness(50%)", "Upper Threshold(100%)", and "Lower Threshold(17%)", along with a "Graph1" and "Graph2" section. The status bar at the bottom indicates "Scanning at 45 FPS", "Frame: 1 of 1", "Sensor(24, 1): 0.0 mmHg", "3/05/2020", and "02:38 PM".

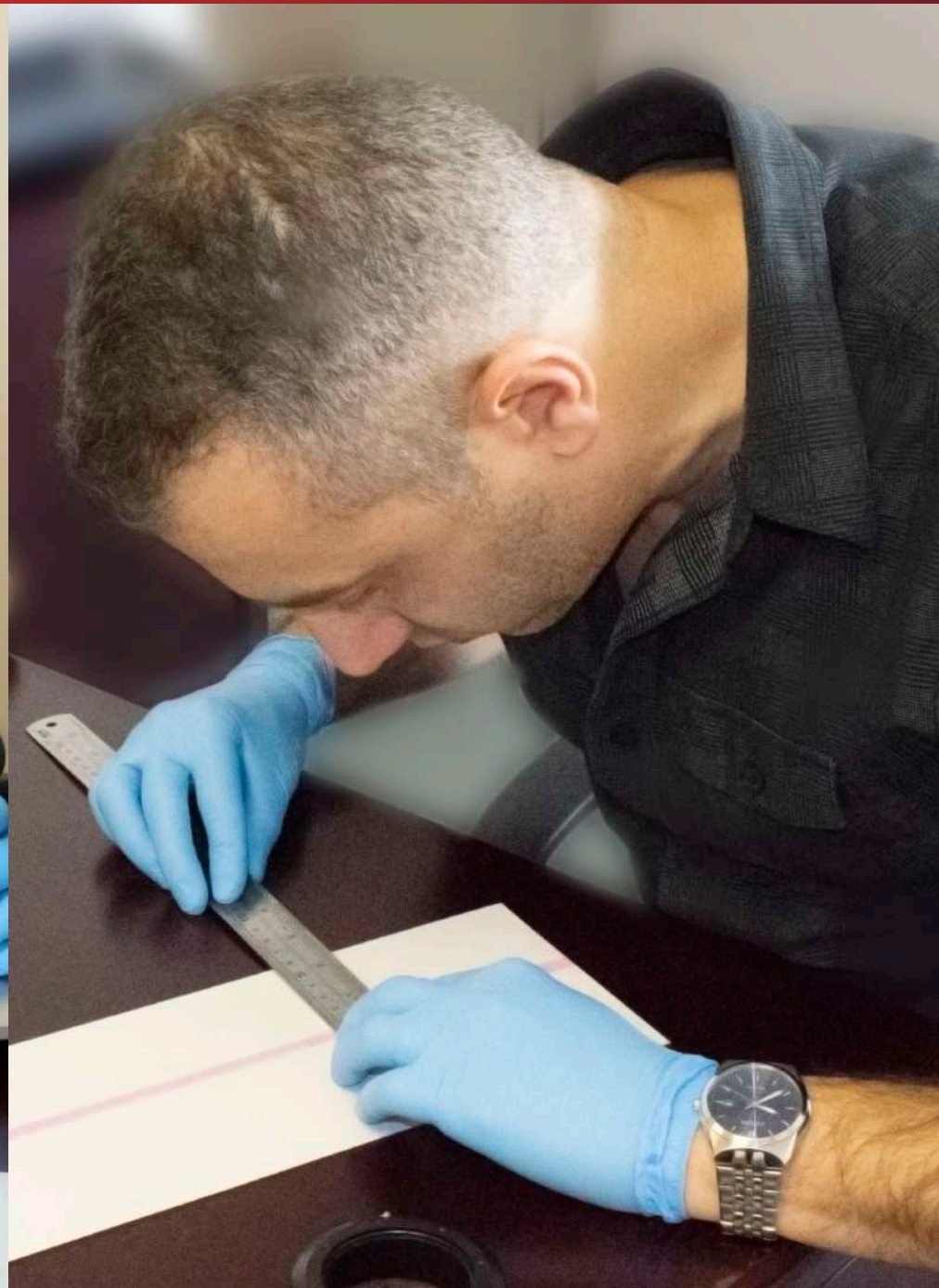
Sensor Products Services

Film Analysis



Sensor Products Services

Film Analysis



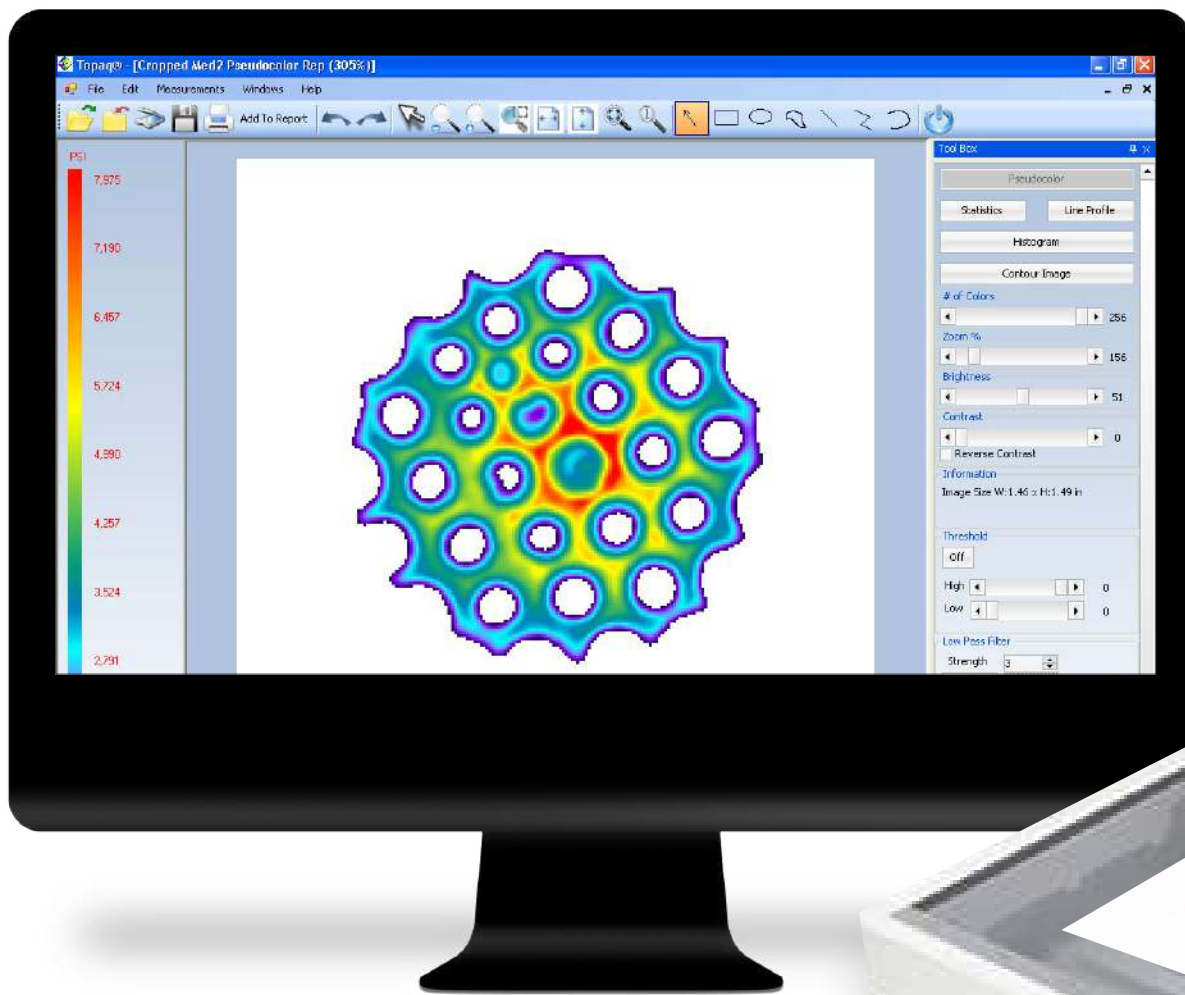
Sensor Products Services

Analysis using Autonis®



Sensor Products Services

Analysis using Topaq®





Contact Information

Sensor Products Inc.
300 Madison Avenue
Madison, New Jersey 07940 USA
Phone: 1.973.884.1755
Fax: 1.973.884.1699
E-mail: info@sensorprod.com
www.sensorprod.com