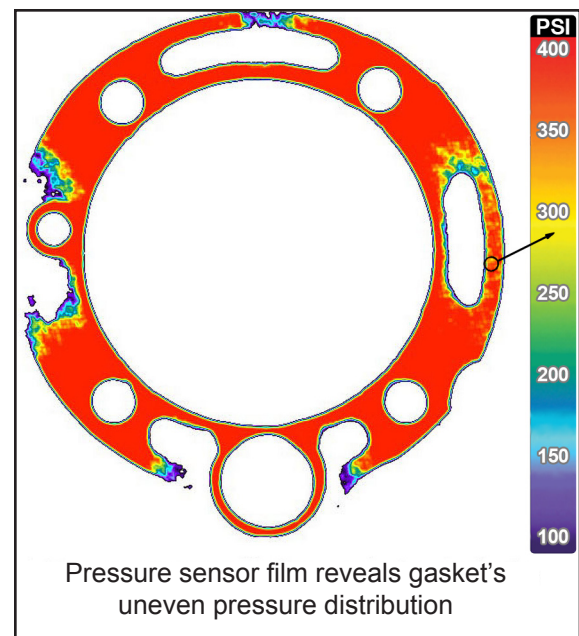


## Pressure Indicating Sensor Film

May 30, 2011 by Randy Frank  
Filed under Featured, Pressure

---

Typical measurement systems average or provide a point measurement. So how can you quickly observe the pressure distribution across an entire surface in applications such as the interface pressure of gaskets, clamps, heat sealing elements, composite layups, LCD panels, and heat sinks? One answer is Fuji Prescale, a Mylar tactile pressure indicating sensor film. Simply placing the 4 to 8-mil thick film between two surfaces and then applying the normal or other desired measurement criteria (max, min, overstress, etc.) pressure produces a permanent color change directly proportionate to the pressure. Since the color change is permanent, it can be archived for future reference. A range of pressure sensitive films are available from 7.2 to 43,200 psi.



For more information about Fuji Prescale sensor film from Sensor Products Inc., go to:  
[www.sensorprod.com](http://www.sensorprod.com)