

## INSIDE METROLOGY

SENSOR PRODUCTS INC. | 03/23/2011

### Sensor Products Offers Fuji Prescale Film for Surface Pressure Measurement

Ideal for invasive or intolerant environments inaccessible to conventional transducers

(SPI: Madison, NJ) -- Sensor Products Inc. (SPI) is an official distributor of Fuji Prescale, a Mylar tactile pressure-indicating sensor film that instantly reveals surface-pressure magnitude and distribution between contacting or impacting surfaces. When placed between the surfaces, it permanently changes color directly proportional to the amount of pressure applied.

Prescale shows precisely how surfaces engage and deform under stress. Pressure variations, which can result in costly defects, are shown by the pattern of calibrated pressure left on the film, which can be compared to a color calibration chart.

The image below shows how pressure variations affect a gasket. Areas that are broken or contain color differentiation fall below the threshold that keeps the gasket's pressure uniform. Additional testing with the sensor film will verify that uniformity has been achieved.

Adjusting pressure with Fuji Prescale is easy. The film is placed between two contacting surfaces, and pressure is applied. It is then removed and can be immediately reviewed for proper pressure. Following testing, the control can be archived for future comparisons.

“Pressure across an interface can't be adequately measured with traditional load cells or built-in controls that measure force, but do not measure the pressure at every point across the contact surface,” says Jeffrey Stark, president of Sensor Products. “This capability makes Fuji Prescale a crucial tool for calibrating equipment that depend on contact surface pressure.”

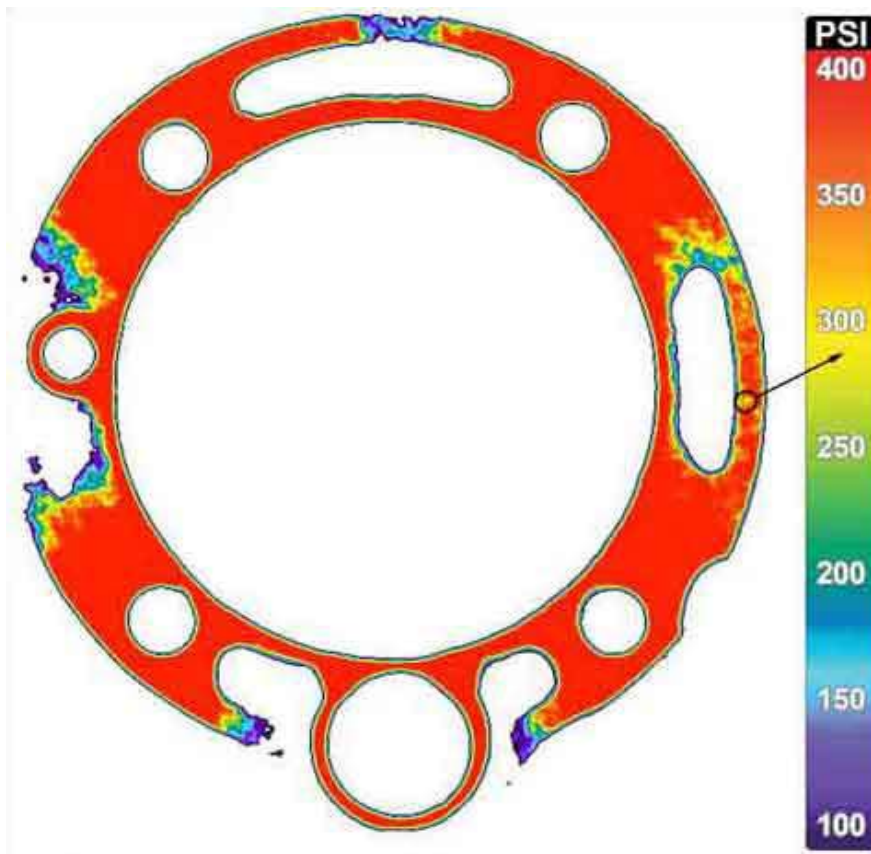
Virtually any two contacting surfaces can be captured by the film. Prescale is thin and flexible, allowing it to conform to both curved and straight surfaces. It may be hand or laser cut to fit unusual shapes and dimensions. It is ideal for invasive and intolerant environments not accessible to conventional transducers. The film confirms FEA predictions and has widespread applicability in research, design, and test; assembly and production; and quality control and maintenance.

Common applications include measuring the interface pressure of gaskets, clamps, bolted joints, heat-sealing elements, nipped rolls, lamination presses, composite layups, welding heads, LCD panels, wafer polishing and bonding, and heat sinks.

Sensor Products is an authorized distributor for Fujifilm Prescale in the U.S.A., Mexico, Canada, and the Caribbean only.



Pressure sensor film reveals gasket's uneven pressure distribution



Pressure sensor film reveals gasket's uneven pressure distribution